



Biomass and Fuel Flexible CHP/District Energy Systems

rmf RMF Engineering
Reliability. Efficiency. Integrity.

District Energy System Applications

- **Colleges & Universities**
- **States & Municipalities**
- **Healthcare**
- **Federal Government**

Middlebury College

Middlebury, VT

rmf RMF Engineering
Reliability. Efficiency. Integrity.

- **Steam Production: 23,500 per hour @ 240 psig**
- **50% reduction in in #6 fuel oil annually (1,000,000 gallons plus)**
- **CO2 reduction: 12,500 plus metric tons per year.**
- **40% reduction in carbon foot print**
- **Annual wood chip consumption: 20,000 tons per year**
- **Electricity produced: 15-20% of the campuses need (3-5 million kilowatt-hours of electric per year)**
- **Particulate emissions: 0.017 lbs/MMBTU, average**



Colby College

Waterville, ME

- (2) 400 hp high pressure boilers
- Combined steam production: 26,000 lbs per hour @ 300psig
- Consumes 22,000 tons of locally sourced woodchips annually
- Fuel sourced within a 50 mile radius from Sustainable forest operations
- 90% reduction in #6 fuel oil annually (1 million gallons)
- Entire plant LEED Gold Certified
- CO emissions: less than 0.1 lbs/MMBTU, average Particulate emissions: 0.01 lbs/MMBTU, average



University of British Columbia

- Key component to commitment to reduce GHG's by 100%
- Syngas fuels a 2MW generator, eliminates new electrical transmission line
- Created a Living Laboratory



State of Vermont District Heating

- New biomass fueled facility for serving the current and anticipated State heating requirements as well as the initial phase of the City's municipal thermal utility.
- Reduce reliance on oil
- Two (2) new 600 BHP wood fueled boiler systems and (1) new #2 oil emergency backup boiler



Enwave Seattle



- Utilized waste wood, avoiding landfill
- Serves approximately 200 buildings downtown
- Reduces CO2 output by 55,000 tons/year
- Cuts carbon footprint by 50-60%
- Supports LEED for customers



Gundersen Lutheran Medical Center, Inc.

La Crosse, WI

Boiler and Wood Metering

rmf RMF Engineering
Reliability. Efficiency. Integrity.



800 horsepower biomass boiler making steam at 400psi

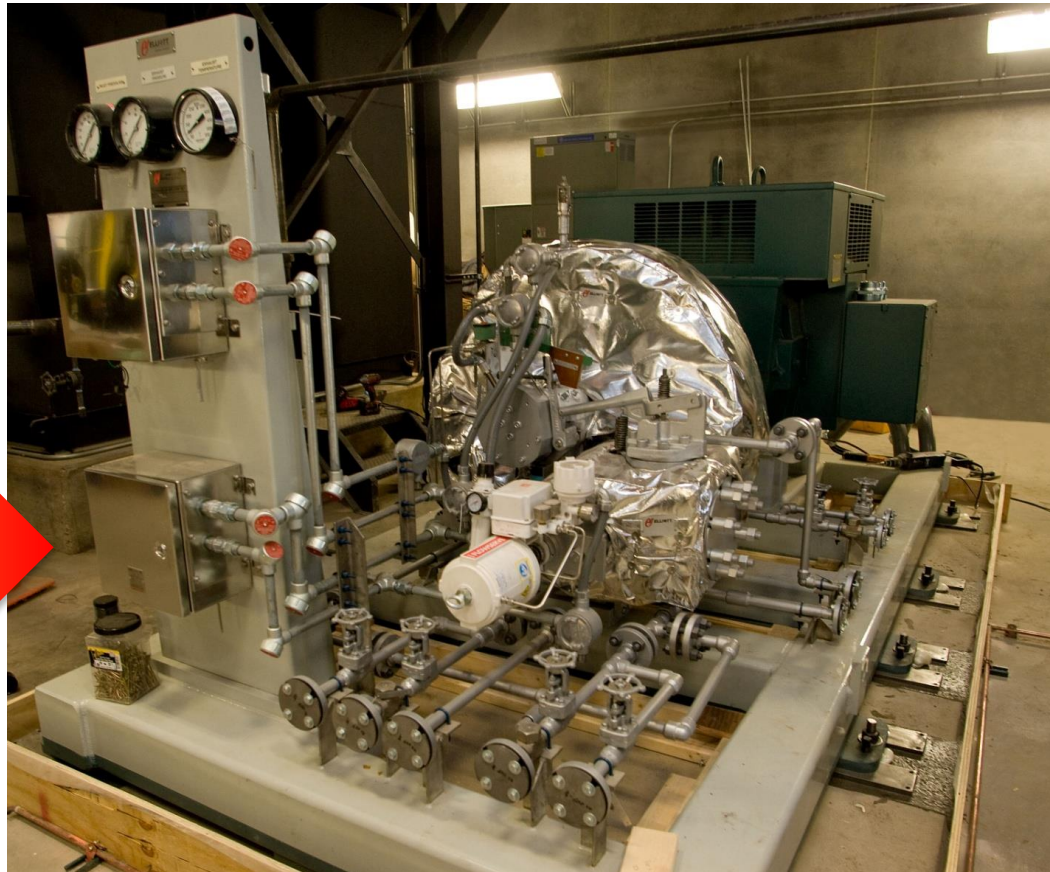


Gundersen Lutheran Medical Center, Inc.

La Crosse, WI

Steam Turbine Generator

rmf RMF Engineering
Reliability. Efficiency. Integrity.



400 psi

Electricity to
Clinic (400kW)

2,200,000 kW-hrs.

Steam to
Facility

100 psi

CHP Tri Generation System

Veterans Affairs Battle Creek, MI

rmf RMF Engineering
Reliability. Efficiency. Integrity.



- **EO 13514: Reduce GHGs by 28% by 2020**
- **VA Goal: 7.5% of energy from renewable sources by 2020**
- **2 MWe and 4.4 MWth for heat & power**
- **GHG Reduction: 14,000 tonnes/yr**
- **Produces 10,400,000 kWh- 84% of yearly electricity load**

Images Courtesy of Nexterra

VA Medical Center

Chillicothe, OH

rmf RMF Engineering
Reliability. Efficiency. Integrity.



- **600HP wood fired boiler, 450 psig**
- **Supplies steam to a 350kW steam turbine generator**
- **Capable of burning a multitude of wood residues**
- **Fully automatic ash extraction system**

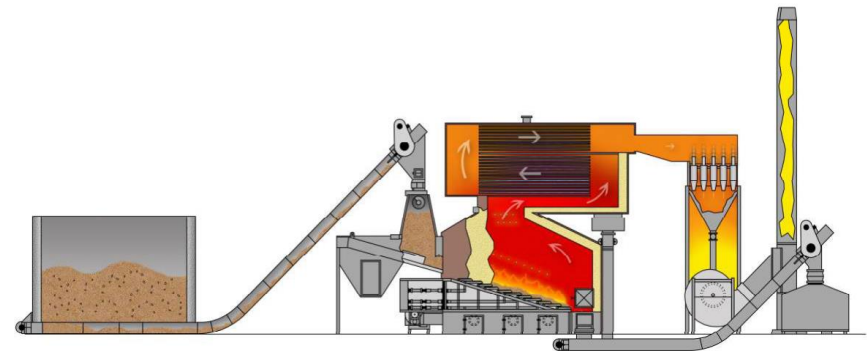
VA Medical Center

Chillicothe, OH

rmf RMF Engineering
Reliability. Efficiency. Integrity.



- 8 Rake moving floor storage bin with fuel handling
- Stepped grate combustion system with automatic ash extraction
- Electrostatic Precipitator Emissions Control
- Test results on particulate emissions less than half of what is normally produced by a natural gas burner



Marine Corps Logistics Base

Albany, GA

RMF Engineering
Reliability. Efficiency. Integrity.

- First “Net Zero” Marine Corps Installation
- Uses woody biomass such as tree trimmings, scrap wood, crop residues, and methane gas from landfills for power generation
- 2.1 MW Combined Heat and Power landfill generator
- 8.5 MW steam turbine to generate 44 MWh per year

